



# Google Gemini for Education: A Comprehensive Guide for Educators and Administrators

Google **Gemini for Education** is a suite of AI-powered tools designed specifically for teaching, learning and administration.

For qualifying institutions, Gemini is available at **no cost** as a standalone app or as part of the **Google Workspace for Education** editions and can be upgraded with a **Google AI Pro for Education** add-on to unlock expanded features and premium models <sup>1</sup>.

All versions include **enterprise-grade data protections**—conversations and files are *not* reviewed by humans or used to train models <sup>2</sup>, and admins can see usage and control access <sup>3</sup>.

## How this guide is organized

The following sections are presented as separate “Documents” for different experience levels. Each document includes examples and best-practice tips tailored for educators and administrators.

1. **Beginner document** – Getting started, essential features and quick wins.
2. **Intermediate document** – Advanced content creation, Canvas, Gems, Deep Research and integrations with Workspace apps.
3. **Advanced document** – High-end models, the AI Pro add-on, long context, Gemini Live and administrative controls.

---

## Document 1 – Gemini for Education: Beginner Guide

### Overview & prerequisites

- **What is Gemini?** Gemini is a generative AI assistant. In education it helps you plan lessons, differentiate materials, create assessments, support students and streamline administrative tasks <sup>4</sup>. Gemini integrates with Google Workspace for Education but also works as a standalone web app at **gemini.google.com**.
- **Access & licensing** All **Education Fundamentals**, **Education Standard** and **Education Plus** users can use the Gemini app free of charge <sup>1</sup>. Simply log into **gemini.google.com** with your school account and look for the spark-icon at the top to open a new chat. To check if your account has expanded access, look for a **Pro** or **Ultra** badge at the top of the page <sup>5</sup>.
- **Usage limits** Students and educators with free Education access use the **Thinking with 3 Pro** model up to **100 prompts per day** and have a context window of **32 k tokens** <sup>6</sup>. Features like **Audio Overviews** (up to 20/day) and **Deep Research** (5 reports/month) are available but may have age restrictions <sup>7</sup>. Upgrades are possible via the **Google AI Pro for Education** add-on (see Advanced guide).

- **Privacy & safety** Gemini conversations in educational domains are covered by Google Workspace for Education terms; chats and uploaded files aren't used to train models <sup>2</sup>. Admins can control access and review usage <sup>3</sup>. Students under 18 get extra guardrails and AI-literacy resources <sup>8</sup>.

## Core features

Feature	What it does	How to use it
<b>Lesson planning</b> <sup>9</sup>	Generate lesson plans aligned to standards and learning objectives; get fresh ideas to make lessons engaging.	Ask, "Plan a 6th-grade lesson on cell structures with warm-up activities, objectives, and formative assessment."
<b>Differentiating materials</b> <sup>10</sup>	Re-level texts or adjust assignments to fit each learner's interests.	Provide the text or topic and ask Gemini to simplify it or tailor it to various reading levels or interests.
<b>Creating assessments &amp; practice</b> <sup>11</sup>	Produce quizzes, exams, assignments, rubrics and answer keys quickly.	Prompt examples: "Create a 10-question multiple-choice quiz on the causes of the American Revolution with answer key," or "Generate practice problems for fractions targeted at 5th graders."
<b>Student support &amp; exam prep</b> <sup>12</sup>	Provide explanations of challenging concepts, build personalized practice tests and offer feedback on writing.	Ask, "Explain Newton's third law with a real-world example," or "Help me prepare a personalized quiz on algebraic equations."
<b>Communication tasks</b> <sup>13</sup>	Draft grant proposals, newsletters, emails to parents, recommendation letters and other communications.	Try: "Write a professional email to parents about the upcoming field trip to the science museum."
<b>Administrative tasks</b> <sup>14</sup>	Summarize long documents, analyze datasets, or create templates for budgeting, permission slips or meeting agendas.	Upload a PDF or document and ask for a summary or a template.
<b>Research &amp; brainstorming</b> <sup>15</sup>	Summarize academic papers, extract key findings or brainstorm new ideas.	Ask, "Summarize the key findings of recent research on climate change impacts on agriculture," or "Brainstorm professional development topics for math teachers."

## Example workflow – drafting a lesson plan

1. **Sign in** to [gemini.google.com](https://gemini.google.com) with your school account.
2. **Choose the model** (start with *Fast* or select **Thinking with 3 Pro** for deeper reasoning).
3. In the chat box, type a clear prompt, e.g., "Create a lesson plan for 8th-grade science on photosynthesis. Include a warm-up, interactive activity, assessment questions and suggestions for differentiation."

4. Review Gemini's output. If it misses an element, ask follow-up questions or request modifications (e.g., "Include an exit ticket aligned to Bloom's application level").
5. Copy or export the plan into a Google Doc or Learning Management System. Use the result as a starting point and customize it for your students.

### Tips for beginners

- **Be specific:** Clear prompts lead to better outputs. Provide context (grade level, subject, desired length, format).
- **Iterate:** Use follow-up prompts to refine. Ask Gemini to rewrite sections, adjust reading level or add more examples.
- **Double-check sources:** Gemini may hallucinate or produce outdated information. Use the *double-check response* feature or verify facts with trusted sources.
- **Observe age restrictions:** Image generation, code apps and certain research features require users to be 18+ <sup>16</sup>.
- **Respect privacy:** Avoid entering sensitive personal data; teach students to do the same.

### Visual example – planning lessons



---

## Document 2 – Gemini for Education: Intermediate Guide

### Beyond the basics: Canvas, study tools & integrations

Once you are comfortable using Gemini for basic tasks, explore these intermediate features to create interactive content, deepen learning and leverage integrations.

## 1. Gemini Canvas: an interactive creation space

- **What it is** – Canvas is an interactive workspace where you and Gemini collaborate to write, code, design documents, slide decks and even basic apps. You can go from a blank slate to dynamic previews in minutes <sup>17</sup> .
- **Starting a Canvas session** – At [gemini.google.com](https://gemini.google.com), click the *Canvas* button below the chat box <sup>18</sup> . Enter a prompt describing what you want to create (e.g., “Create a five-slide presentation about the water cycle”). You can also upload files for context <sup>19</sup> .
- **Editing docs & code in Canvas** – You can edit text directly or ask Gemini to adjust length or tone. The toolbar allows formatting (headings, lists) and you can suggest edits <sup>20</sup> . For coding tasks, open the **Code** panel to debug or modify code <sup>21</sup> .
- **Advanced features** – Add Gemini-powered features to apps (text or image generation) <sup>22</sup> , incorporate LaTeX for mathematical content, or export documents as PDFs <sup>23</sup> . Note that many Canvas features require users to be 18 or older <sup>24</sup> .

## 2. Creating quizzes, flashcards & study guides

Gemini can generate interactive study materials to aid student practice:

- **Generating study materials** – In Gemini Apps, ask: “Create a quiz about Renaissance art,” “Make flashcards about chemical bonds,” or “Create a study guide for Chapter 5 of *To Kill a Mockingbird*.” Tips: start prompts with “Create a quiz/flashcards/study guide about ...” <sup>25</sup> . You can add files as context (e.g., PDFs or notes) <sup>26</sup> and the generated materials open in the Canvas panel <sup>27</sup> .
- **Interact with quizzes** – You can request hints, ask follow-up questions, move between questions, analyze your performance or generate more questions <sup>28</sup> .
- **Flashcards options** – Shuffle cards, get audio playback via text-to-speech or restart the deck <sup>29</sup> .
- **Sharing restrictions** – When signed in with a work or school account, you can’t share quizzes or flashcards outside your domain <sup>30</sup> .

## 3. Deep Research: AI-powered research reports

- **Purpose** – Deep Research conducts in-depth research on almost any subject, producing detailed reports with citations. You can choose which sources (Google Search, Gmail, Drive, uploaded files) to include <sup>31</sup> .
- **Requirements** – You must be 18+ and signed in <sup>32</sup> . There are daily limits on the number of research requests; higher limits are available for Pro or Ultra subscribers <sup>33</sup> .
- **Steps** – Click *Tools* → *Deep Research* at the bottom of the chat, select sources, upload any additional files and ask your research question <sup>34</sup> .
- **Reports & visuals** – Reports provide citations and can include visuals or interactive simulations (with the Ultra plan) <sup>35</sup> . You can listen to the report using an **Audio Overview** or export it to Docs or share it <sup>36</sup> .

## 4. Audio Overviews & podcasts

Turn any file—including Deep Research reports—into an audio podcast that you can listen to on the go <sup>37</sup> . Standard education accounts are limited to **20 audio overviews per day** <sup>7</sup> . To create one, open the report in Canvas and click **Create** → **Audio Overview** <sup>38</sup> .

## 5. Gems: custom AI experts

Gems are personalized versions of Gemini tailored to specific topics. Create a Gem to act as a *reading coach* for struggling readers or a *science tutor*. You can start with a Google-provided Gem or build your own; no coding required <sup>39</sup>. Add instructions, context or sample documents to shape the Gem's expertise.

## 6. Gemini in Workspace apps

Gemini integrates directly into Google Workspace so you can use AI without leaving Docs, Sheets, Slides or Drive. In the side panel, Gemini can summarize, brainstorm, generate content and suggest next steps <sup>40</sup>. Examples:

- **Docs** – Get writing assistance, summarization, brainstorming and content generation <sup>41</sup>.
- **Slides** – Generate new slides, custom images and summaries <sup>42</sup>.
- **Sheets** – Organize data, create tables and formulas <sup>43</sup>.
- **Drive** – Summarize one or multiple documents and surface key facts without opening each file <sup>44</sup>.
- **Gmail** – Use *Help me write* to draft emails or *Contextual smart replies* for quick responses (official help page).

The side panel leverages Google's most capable models (Gemini 1.5 Pro) and automatically provides context-aware prompts <sup>40</sup>. There is no admin control needed to enable it; you access it via the spark button in the top right of each app <sup>45</sup>.

## Example workflows for intermediate users

1. **Create a quiz from notes:** Upload your lecture notes into Canvas and prompt, "Create a multiple-choice quiz with five questions and answers based on these notes." Iterate by requesting hints or more questions.
2. **Generate a slide deck:** Use Canvas to create a Google Slides deck on climate change. Ask Gemini to include relevant images and talking points, then refine the slides using the side panel in Slides.
3. **Conduct research:** Open Deep Research, select Google Search and your Drive as sources, then ask, "What are effective strategies for teaching poetry to English-language learners?" Review the report, ask follow-up questions and export it as a document.

## Tips for intermediate users

- **Upload and combine sources:** Add PDFs, spreadsheets or NotebookLM notebooks to give Gemini more context when generating quizzes or research reports.
- **Use Canvas for drafts:** Start creative projects—grant proposals, interactive timelines or coding examples—in Canvas, then refine them in the appropriate Workspace app.
- **Tailor your Gem:** When creating a custom Gem, include sample outputs, rubrics or reading lists to shape its personality and expertise.
- **Know sharing limitations:** Work/school accounts cannot share Canvas study materials outside the domain <sup>30</sup>.
- **Respect age requirements:** Under-18 users have restricted access to certain features (image generation, code apps, research). Admins should configure age-based access settings accordingly <sup>46</sup>.

## Visual example – interactive canvas & quizzes



## Document 3 – Gemini for Education: Advanced Guide

### Unlocking advanced models & AI Pro features

#### 1. Google AI Pro for Education add-on

The **Google AI Pro for Education** license unlocks Gemini’s most powerful models and expanded limits. It costs **US\$15 per user per month** (discounted rates available for Education Plus customers) <sup>47</sup>. This add-on provides:

- **Expanded access to premium models** including **Gemini 1.5 Pro** and **Gemini 1.5 Ultra**. These models have deeper reasoning and a context window of up to **1 million tokens** <sup>6</sup>, enabling analysis of roughly 1,500 pages of text <sup>48</sup>.
- **Higher usage limits** – more prompts per day, more audio overviews, and more Deep Research reports <sup>49</sup>.
- **Expanded Deep Research** – generate comprehensive reports with more sources and daily research requests <sup>50</sup>.
- **1,500-page uploads** – Understand large books or reports <sup>51</sup>.
- **Gemini in Workspace apps** – Integrate AI directly into Gmail, Docs, Sheets, Forms, Slides, Vids and more, with an AI assistant inside the side panel <sup>52</sup>.
- **Admin controls & reporting** – Manage access, search conversations via Vault, and monitor usage by user <sup>3</sup>.
- **NotebookLM premium features** – 5× higher limits on notebooks and AI research assistance <sup>53</sup>.

## 2. Advanced models & long context

- **Thinking with 3 Pro** – Available to all education users (even without Pro add-on); capable of complex reasoning and coding. Limits are 100 prompts/day (standard) and 100/day with prioritized access for AI Pro users <sup>54</sup> .
- **Fast** – A general-purpose model optimized for speed for everyday tasks.
- **Pro & Ultra (premium)** – Provide deeper understanding, higher context windows and improved code generation. In addition, Ultra can produce interactive visuals in Deep Research reports <sup>35</sup> .

## 3. Gemini Live: real-time voice assistance

Gemini Live allows natural voice conversations with Gemini on mobile devices. You can brainstorm out loud, share your camera or screen and get real-time feedback <sup>55</sup> . Features include:

- **Voice conversation** – Speak naturally and change topics mid-sentence. Gemini adapts to your conversational style <sup>56</sup> .
- **Camera sharing** – Show what you're looking at (e.g., a lab experiment or textbook) and ask questions; Gemini responds with spoken guidance <sup>57</sup> .
- **Screen sharing** – Share your phone screen to get help with selecting photos, understanding a document or navigating settings <sup>58</sup> .
- **App integrations** – Live works with Google Maps, Calendar, Tasks and Keep <sup>59</sup> .

Availability: Gemini Live is offered in over 150 countries and 45+ languages <sup>60</sup> . It requires an internet connection and is only available to users aged 18+ <sup>61</sup> .

## 4. Long-context & cross-domain tasks

With the AI Pro add-on, Gemini can process large files and multiple sources simultaneously. Use cases:

- **Research projects** – Upload lengthy PDFs, theses or novels (up to 1,500 pages) and ask Gemini to summarize themes, extract key points or compare across sources <sup>48</sup> <sup>51</sup> .
- **Complex data analysis** – Provide spreadsheets or code repositories and ask Gemini to perform statistical analyses, generate charts or debug code.
- **Cross-app actions** – Use Gemini to draft emails referencing documents in Drive, schedule tasks or create meeting agendas in Calendar.

## 5. Admin controls & best practices

Administrators play a crucial role in deploying Gemini safely and effectively:

- **Enable or disable Gemini** – Turn Gemini on or off for specific organizational units in the Admin console <sup>62</sup> .
- **Search & archive** – Use Google Vault to search Gemini conversations and export results <sup>63</sup> .
- **Monitor usage** – Review how many users are engaging with Gemini, identify power users and ensure equitable adoption <sup>64</sup> .
- **Set age-based access** – Users must be 18+ to use the AI Pro add-on <sup>46</sup> ; assign the add-on only to eligible users.

- **Educate users** – Provide training on responsible AI use, emphasize verifying AI outputs, and encourage reporting of inappropriate content <sup>65</sup> <sup>66</sup> .

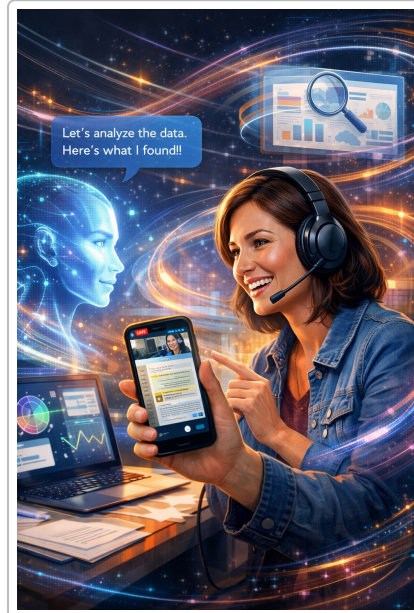
### Example workflows for advanced users

1. **Deep Research with visuals:** With an AI Pro license, gather sources from Google Search and uploaded research papers, ask a complex question (e.g., “Compare different inquiry-based learning models in science education”), wait for the report and then ask Gemini to create charts summarizing the results.
2. **Create a custom Gem:** Build a Gem specialized in supporting new teachers. Provide examples of high-quality lesson plans, rubrics and feedback. Deploy the Gem across your institution so colleagues can get consistent coaching.
3. **Live tutoring session:** Using Gemini Live on your phone, share the camera view of a science experiment. Ask, “Why are the bubbles forming when I mix vinegar and baking soda?” Gemini narrates the chemical reaction in real time.
4. **Data-rich summarization:** Upload a 300-page policy document to a single chat and ask for a summary of key compliance obligations. Gemini returns a concise overview referencing specific sections.

### Best practices & considerations

- **Verify complex outputs:** Even advanced models can hallucinate. Always cross-check with trusted sources, especially when making curriculum decisions or official communications.
- **Ensure ethical use:** Avoid uploading sensitive student or staff information. Align with your institution’s data governance policies.
- **Support under-18 users:** Students receive extra filters and cannot access some features like image generation or code editing <sup>16</sup> . Educators should provide guidance and teach critical thinking.
- **Plan for capacity:** Heavy use can slow down responses; Google may adjust usage limits based on demand <sup>67</sup> . Encourage your community to use Gemini thoughtfully.

## Visual example – live conversation & deep research



## Conclusion

Gemini for Education empowers educators and administrators to **save time, personalize learning, enhance research** and **streamline communication**. Beginners can quickly generate lesson plans and assessments, while intermediate users leverage Canvas, Deep Research and custom Gems to create interactive content. Advanced users unlock the full potential of AI with expanded models, long context windows and real-time voice interactions.

By following the guidelines and examples in these documents, you can integrate Gemini into your teaching and administrative workflows, fostering creativity and efficiency while maintaining the highest standards of privacy and safety.

1 2 3 4 8 9 10 11 12 13 14 15 17 37 39 47 50 51 52 53 62 63 64 Empower Learning with Gemini for Education - Google for Education

[https://edu.google.com/intl/ALL\\_us/ai/gemini-for-education/](https://edu.google.com/intl/ALL_us/ai/gemini-for-education/)

5 6 7 16 48 49 54 Use Gemini Apps with a work or school Google Account - Education - Gemini Apps Help

[https://support.google.com/gemini/answer/14620100?hl=en&co=DASHER\\_Family%3DEducation](https://support.google.com/gemini/answer/14620100?hl=en&co=DASHER_Family%3DEducation)

18 19 20 21 22 23 24 Create docs, apps & more with Canvas - Computer - Gemini Apps Help

[https://support.google.com/gemini/answer/16047321?hl=en&ref\\_topic=16079905](https://support.google.com/gemini/answer/16047321?hl=en&ref_topic=16079905)

25 26 27 28 29 30 Create quizzes, flashcards & more in Gemini Apps - Computer - Gemini Apps Help

<https://support.google.com/gemini/answer/16275879?hl=en&co=GENIE.Platform%3DDesktop>

31 32 33 34 35 36 38 Use Deep Research in Gemini Apps - Computer - Gemini Apps Help

[https://support.google.com/gemini/answer/15719111?hl=en&ref\\_topic=16079905](https://support.google.com/gemini/answer/15719111?hl=en&ref_topic=16079905)

40 41 42 43 44 45 Google Workspace Updates: Gemini in the side panel of Google Docs, Google Sheets, Google Slides, and Google Drive is rolling out now

<https://workspaceupdates.googleblog.com/2024/06/gemini-in-side-panel-of-google-docs-sheets-slides-drive.html>

46 67 Gemini for Google Workspace FAQ - Education - Google Workspace Admin Help

[https://support.google.com/a/answer/14130944?hl=en&co=DASHER,\\_Family%3DEducation](https://support.google.com/a/answer/14130944?hl=en&co=DASHER,_Family%3DEducation)

55 56 57 58 59 60 61 Gemini Live — get real-time voice assistance from Gemini

<https://gemini.google/overview/gemini-live/>

65 66 Guide your child's Gemini Apps experience - Gemini Apps Help

<https://support.google.com/gemini/answer/16109150?hl=en>